

# NEWSLETTER

FRIDAY 17TH APRIL 2026



TEL: 01274 639049

WWW.SWAINHOUSE.CO.UK

EMAIL: OFFICE@SWAINHOUSE.BRADFORD.SCH.UK

ASPIRE

BELIEVE

PERSEVERE

ACHIEVE

## ENGAGE LAUNCH ASSEMBLY



Mrs Pugh and the 'Happiness Heroes' presented a special assembly this week, introducing our next module—**Engage**

We recapped the previous modules **Meet your Brain** and **Celebrate, Appreciate** and **Relate** then talked about what the **Engage** module will include this year.

This term the children will enjoy building on last years learning about setting Goals for Growth.



Let's set ourselves a school challenge...

...to set Big Dream Goals and meet them before the end of the term.

When you go back to your classroom, talk as a class about how you will do this.



# RELATE YEAR GROUP FEEDBACK

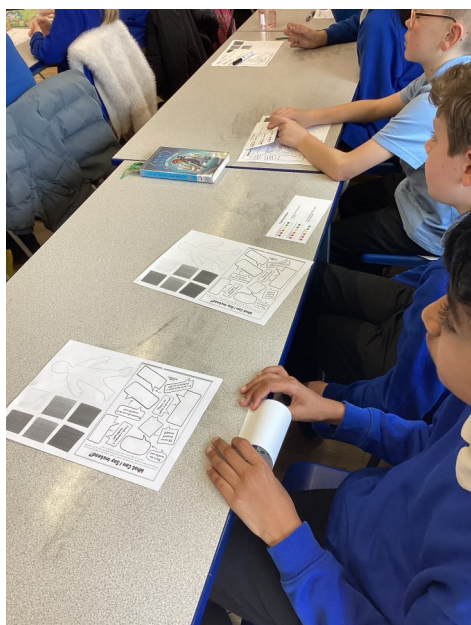


During our myHappy mind assembly this week, children from each group fed back to the rest of school about all the exciting learning they did in the Relate module. It was lovely to hear about the different activities the children participated in.



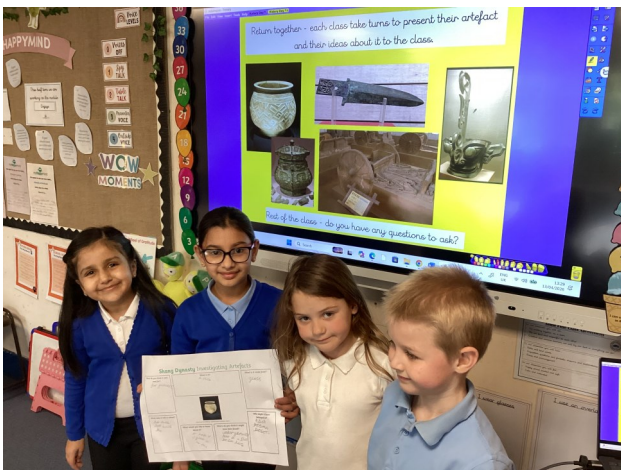
# PREPARING FOR SATS

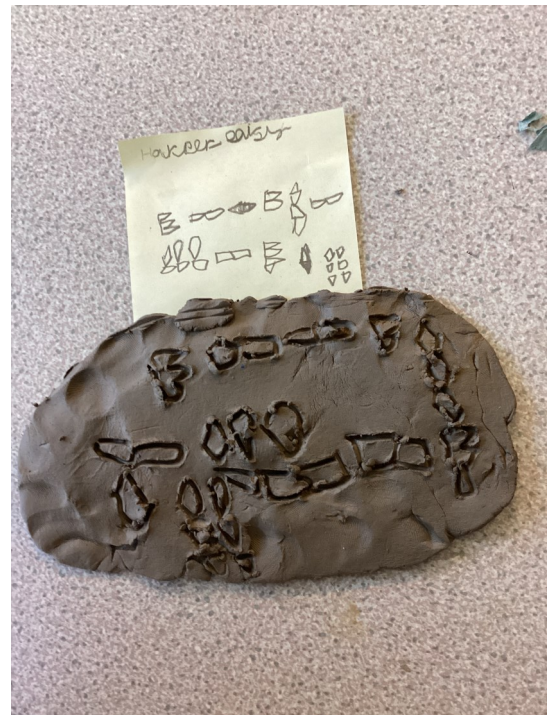
In order to best prepare us for our upcoming assessments, in Year 6 we had an assessment anxiety workshop. We now know how to spot the signs of us feeling anxious and have developed ways to manage this.



# YEAR 3 HISTORY DAY!

Year 3 had a great history day this week! They were transported back to ancient times and enjoyed learning about the different ancient civilization's of the Sumar, the Indus Valley and the Shang Dynasty.





# Year 1 Homework



## The Great Fire of London



We are thrilled with the project homework pieces some of the Year 4 children have made for our new geography unit, Extreme Earth! There's still time to bring yours in when its finished!



# RECEPTION'S ICE CAFE

Reception have opened their new Ice Cafe role play area. The children have been busy making smoothies, snow cones and serving ice cream to all their customers!



# COMPUTING IN ACTION

At Swain House, Computing is taught through the ambitious and inclusive National Centre for Computing's 'Teach computing' scheme. The children at Swain House have access to lots of technology within their computing lessons including iPads, Chromebooks, Micro:bits and Bee-Bots that gives the children life skills and hands-on experiences .

Each half term the children from Year 1 to Year 6 focus on a different aspect of computing:

Autumn 1	Autumn 2	Spring 1	Spring 2	Summer 1	Summer 2
Computer systems and networks	Creating media	Programming A	Data and Information	Creating media	Programming B

Summer 1 : This half term all year groups will be focusing on an aspect of **Creating Media**.

**Year 1 will be:** using a computer to create and format text, and compare this to writing non-digitally.

**Year 2 will be:** using a computer as a tool to explore rhythms and melodies, before creating a musical composition.

**Year 3 will be:** creating documents by modifying text, images and page layouts for a specified purpose.

**Year 4 will be:** manipulating digital images, and reflecting on the impact of changes and whether the required purpose is fulfilled.

**Year 5 will be:** creating images in a drawing program by using layers and groups of objects.

**Year 6 will be:** planning, developing and evaluating 3D computer models of physical objects.



Spring 2 : Last half term all year groups focused on an aspect of **Data and Information**.

**Year 1:** explored object labels, then used them to sort and group objects by properties.



**Year 2:** collected data in tally charts and used attributes to organise and present data on a computer.

**Year 3:** built and used branching databases to group objects using yes or no questions.



**Year 5:** used a database to order data and create charts to answer questions.

**Year 4:** recognised how and why data is collected over time before using data loggers to carry out an investigation.



**Year 6:** answered questions by using spreadsheets to organize and calculate data.

# JUNIOR PARKRUN

junior parkrun -  
where everyone is



welcome

junior parkrun is a free, fun, friendly, weekly, community event organised by volunteers of all ages for children aged 4 to 14.

2k junior parkrun events take place on Sunday mornings and are for the whole community to come together to walk, jog, run and volunteer. Join in on the fun at junior parkrun!



junior parkrun

# GREAT OAK NURSERY



## Great Oak Nursery

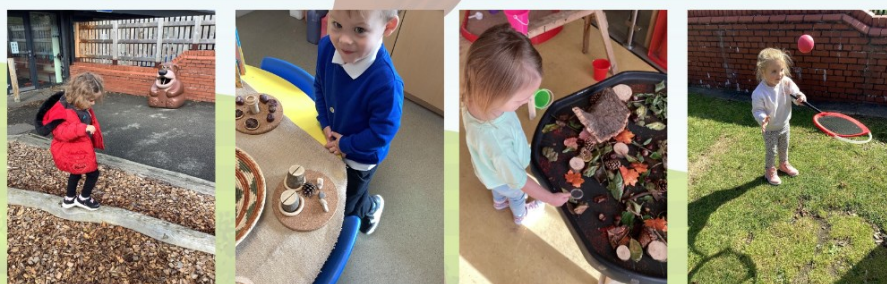
at

### Swain House Primary School

Now enrolling for our September, January and April intakes

## Is your child 3 or 4 years old?

*'My child started Great Oak Nursery in September. All of the teachers have been amazing and my child loves coming to his new school and is thriving*



***We have full & part time places available***

**With wrap around care 7.30am until 6.00pm**

**7.30am Breakfast Club - £2.40 a day**

**7.45am Breakfast Club - £1.90 a day**

**8.00am Breakfast Club - free**

**After School club 3.15pm until 4.00pm £2.50 a day**

**Extra Club 4.00pm until 6.00pm £4.50 a day**

**Please contact the school on**

**01274 639049**

# LITTLE ACORNS NURSERY

## Little Acorns Nursery At Swain House Primary School

Do you have a 2 year old?

September, January and April intake

Little Acorns Nursery is a warm, nurturing atmosphere where children learn through play in a safe and stimulating environment



We have full & part time places available

With wraparound care  
7.30am until 6.00pm

please contact the school on  
01274 639049

# WEEKLY UPDATES

## ATTENDANCE AND PUNCTUALITY

Here are this week's attendance and punctuality figures. There is a proven link between attendance and achievement and it is therefore very important that your child attends school and is on time unless they are too unwell to do so. Our doors open at **8.30am** and close at **8.40am**.

Please see the information below for our whole school and class attendance for the week ending **17.04.26**

### Early Years and Key Stage 1:

CLASS	PERCENTAGE %	LATES
Elm	95.0%	1
Willow	96.0%	3
Kandinsky	89.2%	6
Matisse	90.8%	6
Lowry	93.1%	4
Van Gogh	97.4%	0

### Key Stage 2:

CLASS	PERCENTAGE %	LATES
Anne Fine	92.9%	1
Roald Dahl	91.0%	5
JK Rowling	89.1%	2
Michael Morpurgo	96.5%	4
Elgar	97.1%	2
Mozart	92.6%	3
Beethoven	97.0%	4
Vivaldi	81.2%	3

Congratulations to **Van Gogh Class and Elgar Class** for having the **best attendance** this week.

Congratulations to **Van Gogh Class** for having **no lates!**

Our whole school attendance this week:

**92.9%**

## COMMUNICATION SINCE THE LAST NEWSLETTER

These are the letters, messages and website updates that have been sent out this week. If you have not received any of these letters, please speak to your child's class teacher or contact the office on **01274 639049**.

WEBSITE UPDATES:	National Online Safety - 'Wake Up Wednesday' guide from National Online Safety is about 'Image-Altering Filters'
LETTERS:	16.04.26 - Lowry Class Vaisakhi Assembly Reminder 16.04.26 - Anne Fine Class Assembly Reminder 17.04.26 - Parents Evening
MESSAGES VIA PARENTAPPS:	

# COMMUNITY NEWS



## SEND Youth Voice Summit

A youth voice event for students with special educational needs and/or disabilities





Tuesday 9 June, 2026

10am - 1.30pm

City Hall, Bradford

An opportunity for secondary students with SEND (supported by staff) to share their views and experiences, visit City Hall and meet other young people.

**CONTACT  
US**

-  meet key services
-  share experiences
-  develop ideas
-  shape the future.

**SENDYouthVoice@bradford.gov.uk**

**Phone: 074845 44062**



# COMMUNITY NEWS



## SEND Marketplace drop-in events

Specialist services available to ask questions, give information, advice and support. The last Monday of every month.



- 26 January (2pm - 4.30pm) at Reevy Hill Family Hub
- 23 February (9.30am -12.30pm) at Rainbow Family Hub
- 30 March (1pm - 3pm) at Barkerend Family Hub
- 27 April (9.30am -12.30pm) at Farcliffe Family Hub
- 18 May (2pm - 4.30pm) at TFD Family Hub
- 29 June (9.30am -11.30am) at Shipley Library
- 27 July (1pm - 3pm) at Barkerend Family Hub
- 24 August (9.30am - 12.30pm) at Farcliffe Family Hub
- 25 September (2pm - 4.30pm) at Reevy Hill Family Hub
- 26 October (9.30am -12.30pm) at Rainbow Family Hub
- 30 November (1pm - 3pm) at Barkerend Family Hub
- 21 December (9.30am - 12.30pm) at Farcliffe Family Hub

### Support available on:

Autism/ADHD

Speech and language

Relationship issues

Sleeping difficulties

Finance/benefits

Education

Bradford District and Craven  
Health and Care Partnership



# COMMUNITY NEWS



*splash & glide*  
swimming lessons

**Pre-school  
classes:**  
Monday, Wednesday,  
Thursday & Friday

From 10am



**After school  
classes:**  
Monday, Wednesday  
& Thursday  
4pm - 7pm



**to book email:**  
[hello@velocitykids.co.uk](mailto:hello@velocitykids.co.uk)

*new website coming soon!*



# MYHAPPYMIND

## OUR CONVERSATION CARD OF THE WEEK



### Enjoy a conversation!

Each week we will share a conversation card. These are designed to help you have meaningful and fun conversations with your child and aid discussions about mental health and happiness.

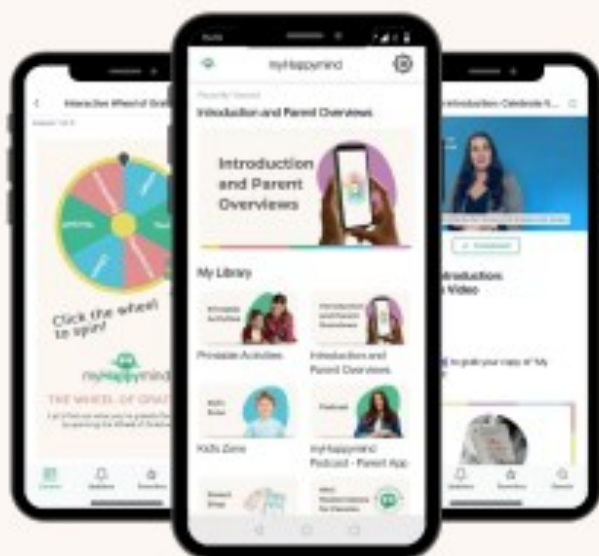


# MYHAPPYMIND APP

The myHappyMind app includes lots of fantastic features such as—kids zone, myHappyMind games and mini master classes for parents .



## Download your FREE myHappyMind Parent App



...An online resource to support you and your family to learn more about how you can use myHappyMind to support your child.



### myHappyMind for Parents

Exclusively for  
parents with children  
at a myHappyMind  
School or Nursery.



Learn all about what  
your children are  
learning in school



YOU WILL NEED THIS AUTHENTICATION CODE TO SIGN UP

107220

# COMING UP IN SUMMER TERM

## SUMMER TERM ASSEMBLY SCHEDULE

DAY	DATE	TIME	EVENT
Tuesday	21.04.26	2.20pm	Lowry Class Vaisakhi Assembly
Thursday	23.04.26	2.20pm	Anne Fine Class Assembly
Thursday	30.04.26	2.20pm	Van Gogh Wesak Assembly
Thursday	07.05.26	2.20pm	Kandinsky Class Assembly
Thursday	21.05.26	2.20pm	Year 4 Residential Assembly
Tuesday	09.06.26	2.20pm	Elgar Class Eid Assembly
Thursday	11.06.26	2.20pm	Mozart Class Assembly
Tuesday	16.06.26	2.20pm	Anne Fine Class Assembly
Thursday	18.06.26	2.20pm	Willow Class Assembly
Thursday	25.06.26	2.20pm	Matisse Class Assembly
Thursday	02.07.26	2.20pm	Elm Class Assembly
Thursday	09.07.26	2.20pm	Roald Dahl Class Assembly
Thursday	16.07.26	1.45pm	Year 6 Leavers Presentation

# REMINDERS

## BREAKFAST CLUB AFTER SCHOOL CLUB

Our Breakfast Club opens at 7.30am at a cost of £2.40 each per day or at 7.45am at the cost of £1.90 each per day. Children from Nursery to Year 6 can attend.

If you would like to book your child into Breakfast Club, please use ParentPay.

We have a free Breakfast Club 8.00am—8.30am

If you would like to book this please use ParentApps

## CLUB

Our After School Club is available until 4pm at a cost of £2.50 each per day.

If you would like to book your child into After School Club, please use ParentPay.

## EXTRA CLUB

We also offer an Extra Club service that runs until 6.00pm at a cost of £4.50 per day.

If you would like to book your child into Extra Club, please use ParentPay.

**Please can you ensure that Extra Club places are booked and paid for in advance - by Monday morning. This ensures registers are accurate and places are booked and guaranteed.**

**If you have any problems booking any of our before or after school clubs, please contact Miss Armitage, one of our learning mentors.**

## DIARY DATES

ANY NEWLY ADDED ITEMS WILL BE IN BLUE

DAY	DATE	TIME	EVENT
TUESDAY	28.04.26		PARENTS EVENING

# MENU 20/04/26

Week 2: 20th Apr, 11th May,  
1st Jun, 22nd Jun, 13th Jul,  
3rd Aug, 24th Aug, 14th Sep,  
5th Oct, 26th Oct

Homemade Bread,  
selection of seasonal  
Vegetables / fresh Salad &  
fresh Fruit served daily.

Selection of cold  
Sandwiches served daily.

## Swain House Primary School Menu

*Mon*

**ProVeg Mild Chicken Curry**  
Indian inspired aromatic Red Tractor Chicken, Sweet Potato & Vegetable Curry, served with Rainbow Rice.

**ProVeg Creamy Mac & Cheese**  
A Macaroni Pasta dish, coated in a creamy Mature Cheddar Sauce, served with crusty Bread.

**Mascarpone Pasta**  
A creamy Sauce with Tomatoes, Mascarpone Cheese and Herbs, served with Crusty Bread.

**Assorted Jacket Potatoes / Selection of Sandwiches**

**Paris Sandwich**  
A light, sweet Pastry with Jam, sandwiched in between, served with Custard.

*Tue*

**Homemade Cheese & Onion Pastry**  
Creamed Potatoes with Cheese & Onions encased in Pastry.

**Super Savoury Roll**  
Flakey Puff Pastry with a seasoned filling, served with Seasoned Potatoes.

**Selection of Sandwiches / Hot Sub Roll**

**Peaches & Ice Cream with Syrup**  
Vanilla Ice Cream with Tinned Peach Slices, with a Chocolate flavoured Syrup.

*Wed*

**Roast Meat Dinner**  
Red Tractor Accredited Meat (either Gammon, Turkey or Pork Loin) served with Yorkshire Pudding, Roast Potatoes, Seasonal Veg & Gravy.

**Halal Roast Chicken Breast**  
Red Tractor accredited HMC Chicken Breast, served with Yorkshire Pudding, Roast Potatoes & Vegan Gravy.

**Toad in the Hole**  
Quorn Sausage, baked in a light Batter, served with Roast Potatoes.

**Selection of Sandwiches / Hot Sub Roll**

**Lemon Drizzle**  
A fluffy Lemon Sponge with Icing Drizzle, served with optional Custard.

*Thu*

**Classic Cheese & Tomato Pizza**  
Wholemeal 50/50 base, topped with a lightly spiced Sauce and topped with Mozzarella / Cheddar Cheese, served with Chips / Jacket Wedges.

**Arrabiata Pasta**  
Chilli Tomato Sauce with Lentils & Peppers, served with Pasta & Crusty Bread.

**Assorted Jacket Potatoes / Selection of Sandwiches**

**Marble Sponge & Chocolate Sauce**  
Homemade Sponge with hints of both Vanilla & Chocolate Cake, served with Chocolate Sauce.

*Fri*

**Beef Burger in a Bun**  
Red Tractor Accredited Beef & Spinach Burger, served in a Bun with Chips / Baked Potato Wedges.

**Halal Chicken Burger in a Bun**  
Red Tractor accredited HMC Chicken Burger, served in a Bread Roll with Salad and Chips / Jacket Wedges.

**Quorn Pattie Burger in a Bun**  
Quorn Sausage-style Pattie, served in a Breadcrake with baked Jacket Wedges / Chips.

**Pomodoro Pasta**  
A simple, delicious, rich Tomato Sauce with Beans, served with Crusty Bread.

**Assorted Jacket Potatoes / Selection of Sandwiches**

**Gallydale Biscuits**  
Homemade, crumbly, Oaty Biscuit.



Scan the QR code to head to our app for full allergen & nutritional info



# NATIONAL ONLINE SAFETY

This week, our 'Wake Up Wednesday' guide from National Online Safety is about 'Image-Altering Filters'.

## What Parents & Educators Need to Know about IMAGE-ALTERING FILTERS

From playful puppy ears on Snapchat to 'beauty mode' on TikTok, image-altering filters are now a routine part of how young people communicate online. While many are harmless, others subtly reshape people's faces and bodies. This can blur the line between reality and edited content, potentially influencing how children and young people see themselves and others.

### WHAT ARE THE RISKS?

#### ALTERED BEAUTY STANDARDS

Many 'beauty' filters smooth skin, reshape facial features, or adjust body proportions. Over time, repeated exposure to these filters can shift a child's idea of what is 'normal' or attractive, creating unrealistic expectations about their own and others' appearances.

#### PRESSURE TO LOOK PERFECT

Filtered images can often attract more 'likes' and positive comments. This can encourage children and young people to rely on editing tools to gain others' approval, rather than feeling confident in their natural appearance.

#### LOW SELF-ESTEEM

Regularly viewing heavily filtered content can lead to comparisons with unrealistic images. This is linked to body dissatisfaction and reduced self-esteem, particularly among children and teenagers.

#### HIDDEN ADVERTISING

Some filters are linked to beauty products or trends, subtly promoting third-party brands. Children and young people may not recognise this as advertising, while also sharing personal data – such as facial images and usage habits – with apps and third parties.

#### BLURRED REALITY

As filters become more advanced and natural-looking, it can be difficult for children and young people to distinguish edited content from real life, especially when filters are used in everyday photos and videos.

#### SEXUALISED EDITS

Certain tools can make users appear older or more sexualised. This may attract unwanted attention, increase the risk of images being shared without consent, and expose young people to unsafe interactions.

## Advice for Parents & Educators

#### START OPEN CONVERSATIONS

Talk regularly about filters, such as how they work and why people use them. Ask the children and young people in your care how filtered images make them feel and encourage honest discussion without judgement.

#### REINFORCE WHAT'S REAL

Help children and young people understand that filtered images are digitally altered and are not an accurate reflection of real life. Emphasise that they don't need to meet these artificial standards.

#### CHALLENGE 'PERFECT' POSTS

When viewing content together, gently point out the signs of editing, filters, or posing techniques. This builds critical thinking and helps children and young people question unrealistic images.

#### PROMOTE OFFLINE CONFIDENCE

Encourage activities that build self-worth beyond appearance, such as sports, hobbies, friendships, and creative interests, so that confidence isn't tied solely to online validation.

#### Meet Our Expert

Parven Kaur is a digital parenting expert and founder of Kids N Clicks, a platform dedicated to helping parents navigate the online world alongside their children. She is an expert contributor for Internet Matters, offering practical guidance on emerging online safety issues. Her insights have been featured by the BBC, The Telegraph, Talk TV, and other major media outlets, supporting families across the UK.

