

# NEWSLETTER

FRIDAY 14TH JUNE 2024



TEL: 01274 639049

WWW.SWAINHOUSE.CO.UK

EMAIL: OFFICE@SWAINHOUSE.BRADFORD.SCH.UK

ASPIRE

BELIEVE

PERSEVERE

ACHIEVE

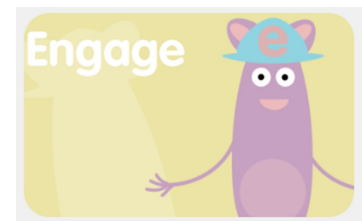
## ENGAGE LAUNCH ASSEMBLY



Mrs Pugh and the 'Happiness Heroes' presented a special assembly this week, introducing our new module—**Engage**

We recapped the previous modules **Meet your Brain, Celebrate, Appreciate** and **Relate** then talked about what the new module will be about.

The **Engage** module is focused on teaching children how we can use all of the skills we have learned so far to be their best selves. Why goal setting is so important and how we can get started with setting goals.



# CHICKS

Reception have really enjoyed looking after the chicks and watching them hatch and grow over the last week. We enjoyed our last day with them today before they went back to the farm. We will really miss them!





# YEAR 2 RE VISITOR

Year 2 had a visitor to help us with our RE learning. Mrs Hesslewood is a Christian, she brought lots of props to use when she told us some stories about Jesus. She told us about Jesus's Baptism, when Jesus chose his disciples and about one of the miracles Christians believe he performed.



# YEAR 5 EID ACTIVITY

The children in Year 5 enjoyed making their own Eid Mosque sun catchers. They had to carefully cut out the template and use tissue paper to create their own sun catcher design.





# PENALTY SHOOT OUT ASSEMBLY



We had a special assembly this week about our up and coming penalty shoot out with Bradford City Football Club. Your child will have received a letter and sponsor form with more details on it.





# SHARING YOUR NEWS!



William in Year 2 had his football presentation evening this weekend. He received not one but two trophies for his outstanding performance. Keep it up William, we are proud of you!

If you have any news about your child's achievements that you would like to share in our newsletter, please speak to your child's class teacher!

## Fundraising!

We held a non-uniform day and bun sale for KS1 and Early Years to help with the costing of the inflatables for our upcoming fun day. We would like to say a huge thank you to all our families who supported this. We raised just over £180.



We are so proud of Year 6's efforts today during their sponsored run! They showed grit and determination to run 3k and they have raised a lot of money along the way! Well done!

**CLICK THE ICON TO SEE REGULAR UPDATES ON OUR FACEBOOK PAGE!**



# BREAK THE RULES DAY



## BREAK THE RULES DAY

Friday 21st June 2024

To help raise money for Year 6 Leavers' Hoodies and whole school outdoor learning resources, we are holding a break the rules day! For one day only, you can break these rules:

- Have crazy or coloured hair
- Wear nail polish
- Wear face glitter
- Wear non uniform clothes
- Wear non uniform shoes
- Bring juice in your water bottle
- Eat pudding first

50p  
a rule  
break!

£2.00 to  
break all  
the rules!



# SUMMER FAIR 2024

FRIDAY 21ST JUNE 2024  
4.00PM - 5.30PM

ADULTS  
50P  
CHILDREN  
FREE

JOIN US FOR OUR 2024  
**SWAIN HOUSE  
PRIMARY SCHOOL  
SUMMER FAIR**

FUN FOR THE WHOLE FAMILY  
TOMBOLA • GAMES • FOOD  
BALLOONS • TATTOOS • FACE  
PAINTING • GLITTER FACE



# MYHAPPYMIND ACCREDITATION



## Parents and Carers! We need you!

We are thrilled to let you know that we are applying to become a myHappy mind accredited school. The accreditation recognises schools and nurseries that are embedding the myHappy mind curriculum into their whole culture and taking real action to improve the mental health and wellbeing of the school community.

If we succeed, we will become an Accredited myHappy mind school and receive some amazing resources for the children to use in school.

As part of the application, we are asked to provide feedback from parents, so we would love your support!

If you could please click the below link and provide myHappy mind with some feedback on the programme, we would really appreciate it.

Click [here](#) to complete the feedback form

Want to learn more? Check out myHappy mind founder Laura Earnshaw's best-selling book on [Amazon](#).

Many thanks,





# MYHAPPYMIND APP

The myHappyMind app has been updated and now includes some new features—kids zone, myHappyMind games and mini master classes for parents .



## Download your FREE myHappyMind Parent App



...An online resource to support you and your family to learn more about how you can use myHappyMind to support your child.



**myHappyMind for Parents**

Exclusively for parents with children at a myHappyMind School or Nursery.



Learn all about what your children are learning in school



**YOU WILL NEED THIS AUTHENTICATION CODE TO SIGN UP**

**107220**

---

# CLUBS AT SWAIN HOUSE



SCAN ME

## STREET DANCE

EXTRA CURRICULAR

SWAIN HOUSE PRIMARY SCHOOL  
RADCLIFFE AVE,  
BRADFORD  
BD2 1JL

EVERY TUESDAY  
3.00PM-4.00PM

FUN | ENERGETIC  
CREATIVE SPACE

£3.00 PER SESSION  
CONTACT [INFO@YACAD.ORG](mailto:INFO@YACAD.ORG)



Yorkshire Academy of  
Creative Arts & Dance

Swain House Primary School and Yorkshire Academy of Creative Arts & Dance Partnership



## CONTEMPORARY DANCE CLASS

A SAFE, ACTIVE  
CREATIVE SPACE  
LET'S DANCE!

£3.00 PER SESSION



TUESDAYS  
4.00PM-5.00PM



SWAIN HOUSE PRIMARY SCHOOL  
RADCLIFFE AVE, BRADFORD, BD2 1JL

TO ENROL CONTACT [INFO@YACAD.ORG](mailto:INFO@YACAD.ORG)  
TEL 01274 955130



Yorkshire Academy of  
Creative Arts & Dance

Swain House Primary School and Yorkshire Academy of Creative Arts & Dance partnership



SCAN ME

## Drama Club

EXTRA CURRICULAR



Thursdays  
3.00pm-4.00pm



Swain House Primary School  
Radcliffe Avenue  
Bradford  
BD2 1JL

HAVE FUN  
CREATE  
PERFORM

YEAR GROUPS  
1-6



£3.00  
Per Person Per Session



Yorkshire Academy of  
Creative Arts & Dance

Swain House Primary School and Yorkshire Academy of Creative Arts & Dance Partnership



## MUSICAL THEATRE

Learn the best moves from your  
favourite musicals

Every Thursday 4.00pm - 5.00pm  
£3.00 per session

Swain House Primary School  
Radcliffe Ave, Bradford BD2 1JL

Contact [Info@yacad.org](mailto:Info@yacad.org)  
Tel | 01274 955130



Yorkshire Academy of  
Creative Arts & Dance

Swain House Primary School and Yorkshire Academy of Creative Arts & Dance partnership



SCAN ME



# COMMUNITY NEWS



**B.A.D.**  
SPADFORD ACTIVE DANCE

WHERE EVERY STEP SPARKS **NEW OPPORTUNITIES** FOR CHILDREN, YOUTH, AND FAMILIES! HERE TO **INSPIRE, SUPPORT** AND **ENERGISE** COMMUNITIES.

**EVERY SATURDAYS DURING TERM TIME!  
STARTS 8<sup>TH</sup> JUNE**

**WHERE:** PHYSICAL IMPACT KICKBOXING AND FITNESS CENTRE, DOWNSTAIRS STUDIO, 182 HARRIS ST, BRADFORD, BD1 5JA  
**TIME:** 10.00AM – 11.00AM  
**FIRST SESSION IS FREE - THEN £2 PER PERSON**  
**BOYS AND GIRLS WELCOME!**  
WEAR COMFORTABLE CLOTHING, BRING YOUR OWN WATER BOTTLE

**FOR MORE INFO**  
CALL LAURA LIDDON ON 07719801013  
OR EMAIL [BRADFORDACTIVEDANCE@GMAIL.COM](mailto:BRADFORDACTIVEDANCE@GMAIL.COM)



FREE TO ATTEND!

ShIPLEY Town Council is funding

## Play in the Parks

Each week from the end of July to the end of August, free sessions will be held in local parks across Shipley and overseen by staff from the Bradford Council Play Service. Aimed at children of all ages to come down for some free family fun.

**Example activities include:**  
**Swing Ball, Kwik Cricket Set, Rounders, Mini Football Goals, Mini Golf Putting Green, Giant Snakes & Ladders, Giant Connect Four, Skipping Ropes, Hula Hoops, Space Hoopers, Frisbees and Eating Ice Cream!**

Join us between 11.00am to 3.00pm

<b>Mon 22 July</b>	Northcliffe Park, BD18 3BX
<b>Mon 29 July</b>	Crowgill Park, BD18 3SN
<b>Mon 5 August</b>	Shipley Central Park, BD18 3DX
<b>Mon 12 August</b>	Red Beck Recreation Ground (Shipley Fields), BD18 2PT
<b>Mon 19 August</b>	Park Street Recreation Ground, BD18 3LL
<b>Wed 28 August</b>	Hirst Wood Recreation Ground (by the children's play area), BD18 4NQ



Shipley Town Council [www.shipleytowncouncil.gov.uk](http://www.shipleytowncouncil.gov.uk)   

SEARCH JOIN US MOVE PLAY ON FACEBOOK

# ju:MP DANCE

JU:MP IS HERE TO INSPIRE, ENERGISE AND SUPPORT OUR CHILDREN WITH FUN DANCE SESSIONS. WORKING ON A DIFFERENT RANGE OF DANCE STYLES TO GET YOU GROOVING!

**Saturday Mornings During Term Time Only**

**WHERE:** Bolton woods Community Centre, 71 Livingstone Rd, Bradford, BD2 1BD  
**TIME:** 10.00am - 11.00am **AGES:** 5 - 14  
**FIRST SESSION IS FREE, £2 per session after**  
**WEAR COMFORTABLE CLOTHING, bring your own WATER BOTTLE**

For More **INFO** call LAURA LIDDON on 07719801013 or email [LAURA.LIDDON@BRADFORD.GOV.UK](mailto:LAURA.LIDDON@BRADFORD.GOV.UK)

Follow us on Facebook @JUMPANCEBRADFORD, Instagram @2021JUMPANCE, Twitter @JUMPANCE2021



**Come and join a new Adventure?**



We are looking for young people aged 6 - 14 to join our scout group, in Beavers, Cubs or Scouts! Want to make new friends, learn new skills and have fun?

If you answer YES! Then we could be the choice for you!



Beavers - Age 6 - 8 - Thursday 6:15pm - 7:30pm  
Cubs - Age 8- 10.5 - Monday 6:30pm - 8pm  
Scouts - Age 10.5 - 14 - Friday 7:30pm - 9pm

Our group meets at St Andrews Church Undercliffe on above nights, please contact us for more information via email - [Group29thbradfordnorth@hotmail.com](mailto:Group29thbradfordnorth@hotmail.com) or just turn up on the night relevant to you.







# EARLY YEARS OPEN DAY



Swain House Primary School  
would like to invite you to our  
Little Acorns Nursery  
and  
Great Oak Nursery  
Opening Day

Wednesday 19th June 2024  
3.30pm until 4.30pm

If you have a 2,3 or 4 year old child you could  
be entitled to free childcare.

For more information please contact our office  
on 01274 639049



# WEEKLY UPDATES

## ATTENDANCE AND PUNCTUALITY

Here are this week's attendance and punctuality figures. There is a proven link between attendance and achievement and it is therefore very important that your child attends school and is on time unless they are too unwell to do so. Our doors open at **8.30am** and close at **8.40am**.

Please see the information below for our whole school and class attendance for the week ending **14/06/2024**

### Early Years and Key Stage 1:

CLASS	PERCENTAGE %	LATES
Elm	94.2%	4
Willow	96.1%	1
Kandinsky	94.3%	0
Matisse	93.7%	2
Lowry	91.0%	0
Van Gogh	92.6%	0

### Key Stage 2:

CLASS	PERCENTAGE %	LATES
Anne Fine	93.4%	4
Roald Dahl	98.1%	2
JK Rowling	94.2%	1
J Wilson	93.3%	1
Elgar	91.7%	2
Mozart	91.9%	1
Beethoven	95.7%	1
Vivaldi	86.2%	1

Congratulations to **Willow Class and Roald Dahl Class** for having the **best attendance** this week.

Well done to **Kandinsky Class, Lowry Class and Van Gogh Class** for having no lates!

Our whole school attendance this week:

**93.4%**

## COMMUNICATION SINCE THE LAST NEWSLETTER

These are the letters, messages and website updates that have been sent out this week. If you have not received any of these letters, please speak to your child's class teacher or contact the office on **01274 639049**.

<b>WEBSITE UPDATES:</b>	National Online Safety - 'Ofcom Media Report 2024'
<b>LETTERS:</b>	10.06.24 - Virtual Book Fair - Bookworms 11.06.24 - PSHE Information - Growing & Changing 13.06.24 - Willow Class Assembly
<b>MESSAGES VIA PARENTAPPS:</b>	11.06.24 - Bookworms Book Fair 14.06.24 - Year 5 Homework

# COMING UP IN SUMMER TERM

## COMING UP THIS HALF TERM

ANY NEWLY ADDED ITEMS WILL BE IN BLUE

DAY	DATE	TIME	EVENT
Friday	21.06.24	4.00pm – 5.30pm	Summer Fair
Wednesday	26.06.24	All Day	Penalty Shoot Out
Friday	28.06.24	All Day	Nursery Trip - Swithens Farm
Tuesday	02.07.24	All Day	Year 6 Trip - Cardigan Fields
Friday	05.07.24	All Day	Reception Trip - Thornton Hall Farm
Monday	08.07.24	1.30pm	KS1 Fun Day
Thursday	11.07.24	All day	Year 1 Trip - Yorkshire Wildlife Park
Thursday	11.07.24	1.30pm	KS2 Sports Day
Friday	12.07.24	All Day	Year 2 Trip - Sheffield Butterfly House
Friday	12.07.24	All Day	Year 4 Trip - Jorvik Centre
Friday	19.07.24	N/A	School Closes
Tuesday	03.09.24	N/A	School Reopens



Billy Bantam will be coming to school for a sponsored penalty shoot out on Wednesday 26th June. Your child should have received a sponsor form and letter.

Any questions, please see your child's class teacher.



# REMINDERS

## BREAKFAST CLUB

Our Breakfast Club opens at 7.30am at a cost of £2.50 each per day or at 7.45am at the cost of £2.00 each per day. Children from Nursery to Year 6 can attend.

If you would like to book your child into Breakfast Club, please use ParentPay.

## AFTER SCHOOL CLUB

Our After School Club is available until 4pm at a cost of £2.00 each per day.

If you would like to book your child into After School Club, please use ParentPay.

## EXTRA CLUB

We also offer an Extra Club service that runs until 5.30pm at a cost of £4.00 per day.

If you would like to book your child into Extra Club, please use ParentPay.

**Please can you ensure that Extra Club places are booked and paid for in advance - by Monday morning. This ensures registers are accurate and places are booked and guaranteed.**

**If you have any problems booking any of our before or after school clubs, please contact Miss Armitage, one of our learning mentors.**

## SUMMER TERM ASSEMBLY SCHEDULE

DAY	DATE	TIME	EVENT
Thursday	20.06.24	2.30pm	Willow Class Assembly
Thursday	27.06.24	2.30pm	Elm Class Assembly
Thursday	04.07.24	2.30pm	Kandinsky Class Assembly
Thursday	18.07.24	1.45pm	Year 6 Leavers Production

# MENU 17/06/24

## Swain House Primary School WEEK 2

W/C  
15th Apr, 6th May,  
27th May, 17th June,  
8th July

# MENU

For full allergen & nutritional  
information head to  
<https://schoolmeals.bradford.gov.uk>



the **food quarter**

### Choose from...

**MON**

- Cheese Pasta Bake
- Soya Pasta Bolognese
- Cheddar & Mozzarella Hot Baguette
- Jacket Potato with Cheese & Tuna

- Garlic Bread
- Assorted Individual Salads

### Desserts...

- Oat Cookie
- Freshly Prepared Fruit

### Choose from...

**TUE**

- Mild Chicken Curry
- Halal Chicken Doplaza
- Quorn & Veg Fried Rice
- Cheddar & Mozzarella Hot Baguette
- Jacket Potato with Cheese & Tuna

- Rice, Naan Bread
- Seasonal Vegetables, Assorted Individual Salads

### Desserts...

- Individual Ice Cream Tub
- Freshly Prepared Fruit

### Choose from...

**WED**

- Savoury Mince In Yorkshire Pudding
- Halal Chicken Roll
- Cheese Rolls
- Cheddar & Mozzarella Hot Baguette
- Jacket Potato with Cheese & Tuna

- Creamed Potatoes, Yorkshire Pudding
- Seasonal Vegetables, Assorted Individual Salads

### Desserts...

- Cornflake Tart
- Freshly Prepared Fruit

### Choose from...

**THUR**

- Cheese & Tomato Pizza
- Assorted Sandwiches

- Chips
- Baked Beans, Assorted Individual Salads

### Desserts...

- Flapjack
- Freshly Prepared Fruit

### Choose from...

**FRI**

- Fish Fingers
- Quorn Sausage In a Bun
- Cheddar & Mozzarella Hot Baguette
- Jacket Potato with Cheese & Tuna

- Jacket Potato Wedges
- Seasonal Vegetables, Assorted Individual Salads

### Desserts...

- Chocolate Sponge
- Freshly Prepared Fruit

Suitable for...



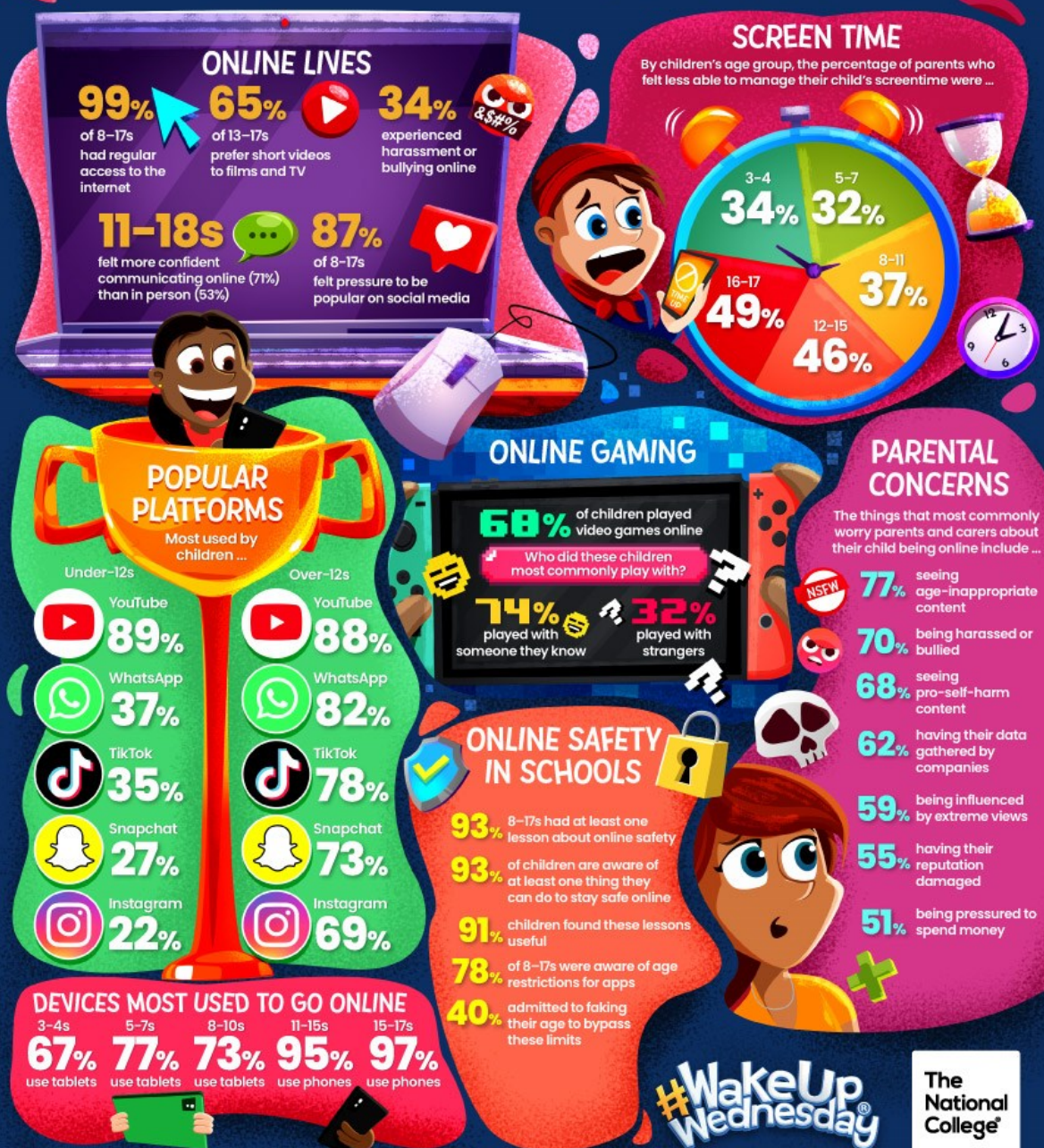
# NATIONAL ONLINE SAFETY

This week, our 'Wake Up Wednesday' guide from National Online Safety is all about the 'Ofcom Media Report 2024'

At The National College, our WakeUpWednesday guides empower and equip parents, carers and educators with the confidence and practical skills to be able to have informed and age-appropriate conversations with children about online safety, mental health and wellbeing, and climate change. Formerly delivered by National Online Safety, these guides now address wider topics and themes. For further guides, hints and tips, please visit [nationalcollege.com](https://nationalcollege.com).

## What Parents & Educators Can Learn from the OFCOM MEDIA REPORT 2024

Each year, Ofcom - the UK's regulatory body for communications - produces an overview of children and parents' media experiences over the course of the previous year. At the time of writing, the latest of these reports, 'Children and parents: media use and attitudes 2024' has just been published, and we've plucked out some of its most thought-provoking findings regarding online safety.



Source: See full reference list on guide page at: [nationalcollege.com/guides/media-use-and-attitudes-report-2024](https://nationalcollege.com/guides/media-use-and-attitudes-report-2024)