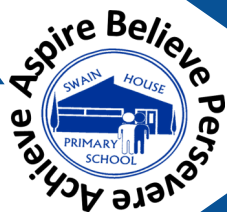


NEWSLETTER

FRIDAY 18TH OCTOBER 2024



TEL: 01274 639049

WWW.SWAINHOUSE.CO.UK

EMAIL: OFFICE@SWAINHOUSE.BRADFORD.SCH.UK

ASPIRE

BELIEVE

PERSEVERE

ACHIEVE

YEAR 5

Year 5 had a fantastic time during their trip to Bradford City. They had a full stadium tour including going pitch side, into the changing rooms and visiting the executive boxes. They saw the memorial for the Bradford City Fire, which we have been learning about through our English and History lessons



TESCO FOOD DONATION

We would like to thank Tesco's supermarket on Canal Road for their generous donation of supplies for our Breakfast club.

Sharon met with Tracey Porter the Tesco's community champion on Wednesday to take accept a large quantity of breakfast foodstuffs.



MYHAPPYMIND

OUR CONVERSATION CARD OF THE WEEK



Enjoy a conversation!

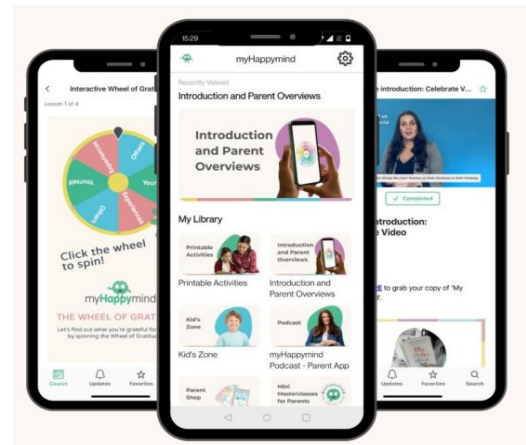
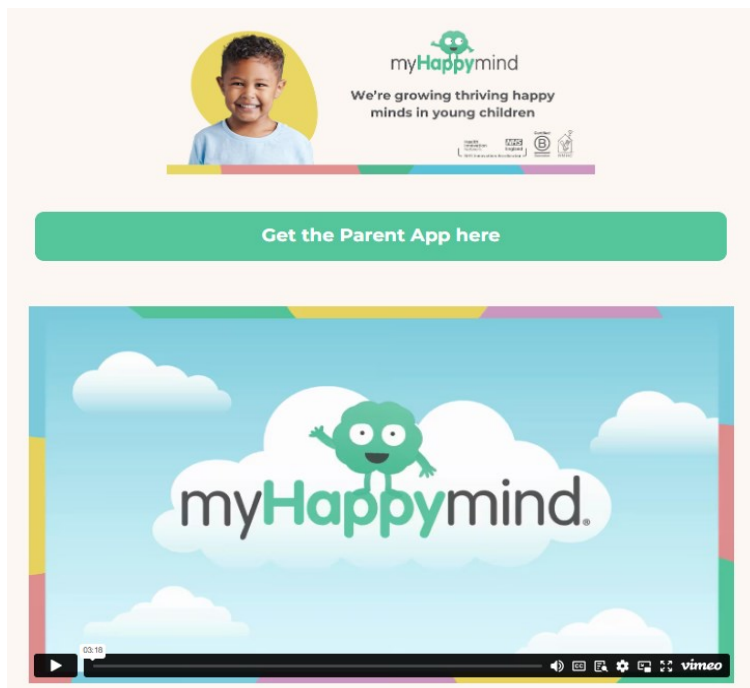
Each week we will share a conversation card. These are designed to help you have meaningful and fun conversations with your child and aid discussions about mental health and happiness.



MYHAPPYMIND PARENT APP

myHappyMind Parent App

Download the Parent App to learn all about the Science of Happiness and also access a range of games, songs, Happy Breathing resources and much more at home!



Scan the QR code to access information about the Parent App.



Once on the webpage click on the 'Get the Parent app here' tab.

Complete your details, then you will be sent access details via email.

Our school Authentication Code is **107220**

ZARACH CHARITY

Zarach's Mission:

To end child bed poverty in England, giving children the opportunity to engage at school and a chance to break the cycle of poverty.

"Are their school-age children unable to gain a good night's sleep in your home due to not having the appropriate beds, no beds, broken beds, or multiple children sharing a bed? Did you know that Zarach is a charity that exists in your area to provide brand new beds, pyjamas, and bedding for children where families can no longer afford to buy them? If you are one of these families, please see your pastoral team in your son/daughters school and they can submit a referral to Zarach - please see the attached visual aid of our process."

Zarach Referral Process

For Schools to share the journey with parents.



To view the charity's website click [here](#)



THANK YOU!

Thank you so much to all the parents and children who visited our Book Fair earlier this month. We raised £1120.23 and that means we were able to purchase £560.12 worth of books for our class libraries and Free Reader books! Thank you so much.

GOODBYE AND CONGRATULATIONS!

We would like to say goodbye and best wishes to Miss Brow, who left us last Friday to go on maternity leave!



We are looking forward to cuddles with baby when she comes to visit us.

WHO TO SPEAK TO IN SCHOOL



Who to speak to in school

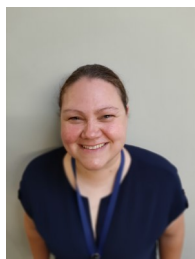
There may be times when you need to speak to a member of staff in school about your child. Please always speak to your child's Class Teacher first. If you need to speak to your child's Phase Leader, their details are below.



If your child is in Early Years, you can speak to Mrs Laycock.



If your child is in KS1, you can speak to Mrs Normington.



If your child is in Lower Key Stage 2, you can speak to Miss Broomfield.



If your child is in Upper Key Stage 2, you can speak to Mr Gibbs.

SHARING YOUR NEWS!



Freya in Year 3 completed her level 2 badge in her acro class, well done Freya!

Maddison in Year 3 landed her back handspring on a mat, well done Maddison!



Georgie in Year 3 achieved bronze position in her gymnastics competition, well done Georgie!

If you have any news about your child's achievements that you would like to share in our newsletter, please speak to your child's class teacher!

**CLICK THE ICON TO SEE REGULAR UPDATES
ON OUR FACEBOOK PAGE!**



SPOTLIGHT ON SEND

(SPECIAL EDUCATIONAL NEEDS AND DISABILITIES)

Each half-term, I write a section on our school newsletter to keep parents and carers of pupils on the SEND register 'in the loop' about all things SEND related. I highlight support available in school and also resources and workshops available in the local area.

Mrs. White

Assistant Head/SEND.co

Keep updated with all things SEND at Swain House. Click [here](#) or scan the QR code.



Bradford Local Offer

The Local Offer brings together information for children and young people with special educational needs and disabilities and their families.

<https://localoffer.bradford.gov.uk/>



Bradford Local Offer

The SEND Local Offer website provides valuable information and resources for parents and carers. There is a useful list of support groups available in the local area. Click [here](#) to see the support group list.

In their monthly newsletter you will find out about the latest useful SEND news, information, stories, upcoming events, consultations, holiday activities and much more inside every issue. Sign up for the newsletter [here](#).

Speech and Language

We are aware of the waiting lists for speech and language sessions via the NHS.

Please [click here](#) to access NHS resources to support your child at home.

If you are concerned about your child's communication skills, you can refer them for support using this link - [Click here](#)

CLICK THE ICON TO SEE REGULAR UPDATES ON OUR
FACEBOOK PAGE!



WEEKLY UPDATES

ATTENDANCE AND PUNCTUALITY

Here are this week's attendance and punctuality figures. There is a proven link between attendance and achievement and it is therefore very important that your child attends school and is on time unless they are too unwell to do so. Our doors open at **8.30am** and close at **8.40am**.

Please see the information below for our whole school and class attendance for the week ending **18/10/24**.

Early Years and Key Stage 1:

CLASS	PERCENTAGE %	LATES
Elm	94.2%	1
Willow	96.7%	4
Kandinsky	95.3%	2
Matisse	99.7%	1
Lowry	99.0%	0
Van Gogh	94.3%	2

Key Stage 2:

CLASS	PERCENTAGE %	LATES
Anne Fine	97.7%	2
Roald Dahl	96.3%	3
JK Rowling	97.6%	3
Michael Morpurgo	94.6%	3
Elgar	95.0%	2
Mozart	94.5%	1
Beethoven	94.3%	4
Vivaldi	94.0%	1

Congratulations to **Matisse Class, Lowry Class, Anne Fine Class and JK Rowling Class** for having the **best attendance** this week.

Well done to **Lowry Class** for having **no lates!**

Our whole school attendance this week:

96.0%

COMMUNICATION SINCE THE LAST NEWSLETTER

These are the letters, messages and website updates that have been sent out this week. If you have not received any of these letters, please speak to your child's class teacher or contact the office on **01274 639049**.

WEBSITE UPDATES:	National Online Safety - 'Wake Up Wednesday' guide from National Online Safety is about 'IPads'.
LETTERS:	17.10.24 - Michael Morpurgo Class - Deepawali Assembly 17.10.24 - Extended Wraparound Care
MESSAGES VIA PARENTAPPS:	14.10.24 - Library - Open after school on Fridays! 16.10.24 - School meal price increase

MYHAPPYMIND APP

The myHappyMind app has been updated and now includes some new features—kids zone, myHappyMind games and mini master classes for parents .



Download your FREE myHappyMind Parent App



...An online resource to support you and your family to learn more about how you can use myHappyMind to support your child.



myHappyMind for Parents

Exclusively for parents with children at a myHappyMind School or Nursery.



Learn all about what your children are learning in school



YOU WILL NEED THIS AUTHENTICATION CODE TO SIGN UP

107220

MYHAPPYMIND

**We are proud to announce
that we are a myHappyMind
Bronze Accredited school!**

This means we have demonstrated our
commitment to building a wellbeing culture for
our entire school community.



HALLOWEEN DISCO

HALLOWEEN DISCO

5.00PM – 6.30PM

(there will be flashing lights)

Tickets

£2.00

**Sweets, Crisps, Juice,
Tattoos and Face Painting**



**THURSDAY 24TH
OCTOBER 2024**

**NEW DISCO TIME
5.00PM – 6.30PM**

**ALL CHILDREN MUST BE COLLECTED BY
AN ADULT**

NO MOBILE PHONES ALLOWED



HELP GREAT OAK NURSERY

GET EXTRA RESOURCES FOR YOUR CHILD



DID YOU KNOW

We can claim £300 of additional funding for every eligible 3 or 4 year old in our care.

This money helps us provide activities and new equipment to benefit your child.

HOW CAN YOU HELP?

If you receive one of the benefits listed, we will be able to access this Early Years Pupil Premium funding for your child.

To check if your child is eligible, **scan the QR code** with your phones camera and complete the form or call the office on **01274 639049**



DO YOU RECEIVE ANY OF THE FOLLOWING BENEFITS:

- Income Support
- Income-based Job Seekers Allowance
- Guaranteed Element of State Pension Credit
- Universal Credit, and household income is less than £7,400 a year after tax, not including benefit payments
- Child Tax Credit (provided you're not also entitled to Working Tax Credit and have an annual gross income of less than £16,190)
- Working Tax Credit run on paid for 4 weeks after you stop qualifying for Working Tax Credit.
- Support under Part Vi of the Immigration and Asylum Act 1999 or if your child has been looked after by the Local Authority for at least one day, adopted from care, left care through special guardianship or subject to a child arrangement order.





Open Days

Is your child starting school in September 2025?

Why not visit Swain House Primary School to find out about our exceptional standards, amazing school environment and wrap around care (from 7:30am to 6pm) to support your child through their school journey.

Ofsted said " *This is a happy and friendly school. Leaders have a deep commitment to serving their pupils, families and community.*"

Monday 21st Oct @ 10am
Monday 21st Oct @ 5pm
Monday 11th Nov @ 5pm

BOOK NOW

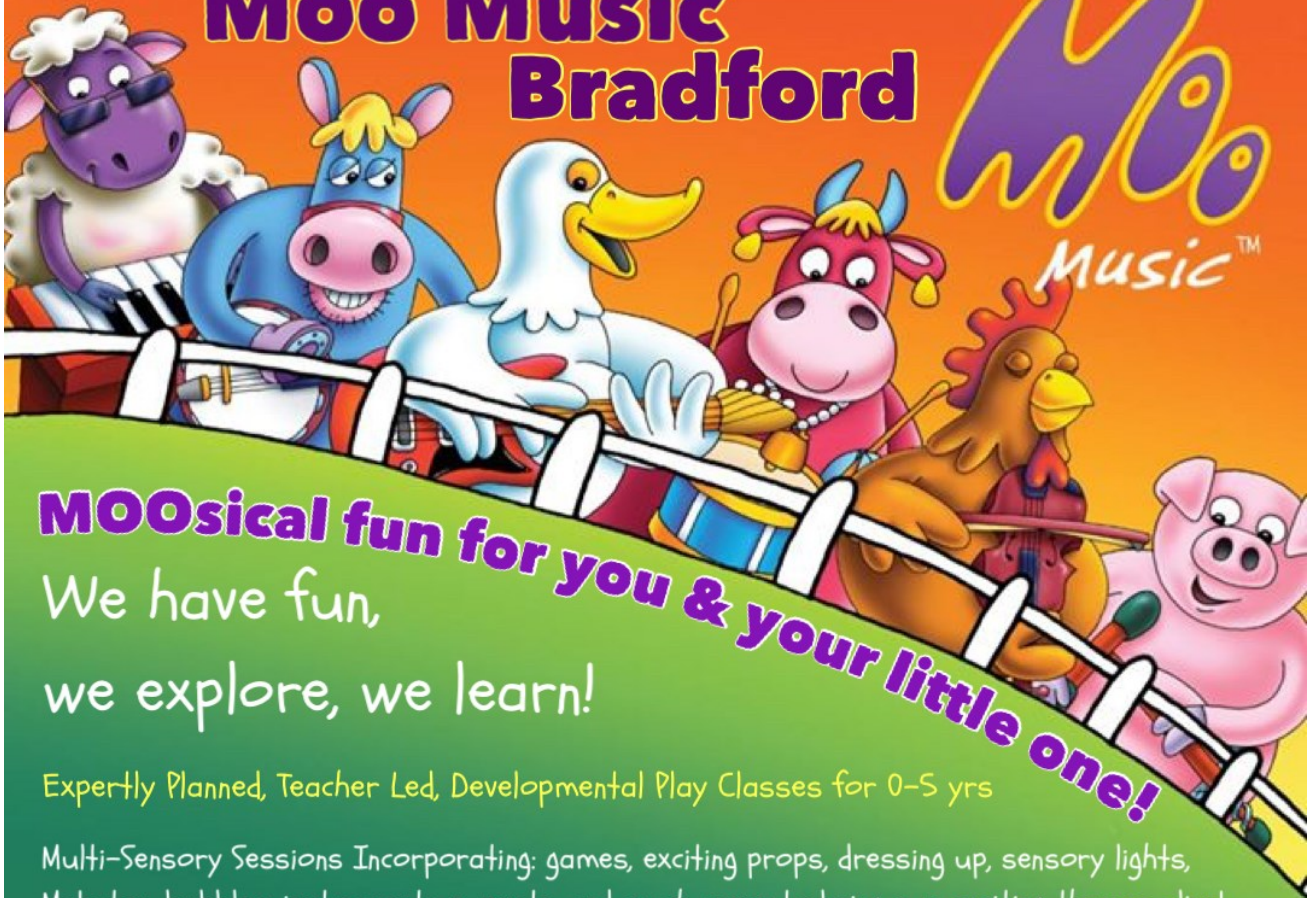
 01274 639049

 office@swainhouse.bradford.sch.uk

FIND US ON



Moo Music Bradford



MOOsical fun for you & your little one!

We have fun,
we explore, we learn!

Expertly Planned, Teacher Led, Developmental Play Classes for 0-5 yrs

Multi-Sensory Sessions Incorporating: games, exciting props, dressing up, sensory lights, Makaton, bubbles, instruments puppets, and much more to bring our exciting themes alive!

Inspired by the seasons and in line with Early Year's Guidance

Fridays September, 2024

Swain House Primary School:

Radcliffe Avenue, BD2 1JL

Mixed@ 10.45-11.30

Baby@ 12-12.45

Contact Farmer Sally:

07431 502 401

sallyr@moo-music.co.uk



Follow us on:



Visit: moo-music.co.uk/areas/bradford

CHRISTMAS FAIR



★ *Join us at* ★

SWAIN HOUSE PRIMARY SCHOOL CHRISTMAS FAIR

★ ★

TOMBOLAS.GAMES.RAFFLES.MUSIC.STALLS
AND DELICIOUS TREATS!

FRIDAY 6TH DECEMBER • 4.00PM - 5.30PM

If you would like to have a stall at our
fair please email your interest to
friends@swainhouse.bradford.sch.uk



COMMUNITY NEWS



Come and find out why your children's oral hygiene is important!

ORAL HEALTH SESSION

TUESDAY 5TH NOVEMBER
9AM - 11AM

ADDRESS: Community Works - BD3 0DW
CALL LUCY : 07974 894 126

Peel Park Scarecrow Trail

THURSDAY 31ST OCTOBER
12PM - 3PM

Follow the Trail around Peel Park

Enjoy a fabulous day out in Peel Park with your friends and family

Hot/Cold drinks/Soup/Toasties & Snacks will be sold from the Hub (Cash Only)

Trail maps will be available from Peel Park Y&C Hub

To enter your Scarecrow into the Trail
Please email
Pauline.smith@bradford.gov.uk or 07974259276
CLOSING DATE Tuesday 22nd October

Peel Park Youth & Community Hub (Former Bowling Hut)



LIKE AND FOLLOW US @GOWILDOUTDOORS

DATES
FROM 28TH OCTOBER UNTIL 1ST NOVEMBER
CALVERLEY COFE PRIMARY SCHOOL 10-4PM

GO WILD OUTDOORS

OCTOBER HALF TERM 2024
FOREST HOLIDAY CAMP



OUR FUN ACTIVITIES INCLUDE

- OUTDOOR PLAY • DEN BUILDING
- WOODLAND CRAFTS • SURVIVAL SKILLS
- WHITTLING • SOFT AXE THROWING
- CAMPFIRE TREATS • SOFT ARCHERY

+ MANY MORE !

ALL CHILDREN 4+ IN RECEPTION (24/25) ACROSS THE DISTRICT ARE WELCOME TO JOIN (NOT SUITABLE FOR NURSERY AGES)

WRAPAROUND CARE + INDOOR FACILITIES AVAILABLE

£25 PER CHILD +
MULTIPLE DISCOUNT DAYS

BOOK YOUR CHILD'S PLACES VIA -
WWW.GOWILDOUTDOORS.CO.UK



MINDFULNESS & WELLBEING

VENUE
Active Minds CIC
Thornbury Centre
79 Leeds Old Rd
Bradford BD3 8Jx

Do you want to

- Improve your health & wellbeing
- Make new friends
- Build confidence & self esteem
- Learn new skills
- Improve healthy eating
- Join in fun activities: walking, swimming, zumba, arts & craft.....& much more

LADIES ONLY
Every Tuesday 10am

For Further Information & registration contact Ashi
T: 07900176070
E: activeminds@gmx.co.uk



ACTIVE MINDS



REMINDERS

BREAKFAST CLUB

Our Breakfast Club opens at 7.30am at a cost of £3.00 each per day or at 7.45am at the cost of £2.50 each per day. Children from Nursery to Year 6 can attend.

If you would like to book your child into Breakfast Club, please use ParentPay.

AFTER SCHOOL CLUB

Our After School Club is available until 4pm at a cost of £2.50 each per day.

If you would like to book your child into After School Club, please use ParentPay.

EXTRA CLUB

We also offer an Extra Club service that runs until 5.30pm at a cost of £4.50 per day.

If you would like to book your child into Extra Club, please use ParentPay.

Please can you ensure that Extra Club places are booked and paid for in advance - by Monday morning. This ensures registers are accurate and places are booked and guaranteed.

If you have any problems booking any of our before or after school clubs, please contact Miss Armitage, one of our learning mentors.

DIARY DATES

ANY NEWLY ADDED ITEMS WILL BE IN BLUE

DAY	DATE	TIME	EVENT
Thursday	24.10.24	5.00pm - 6.30pm	Halloween Disco
Thursday	24.10.24		School Closes
Monday	04.11.24		School Reopens

COMING UP IN AUTUMN TERM

AUTUMN TERM ASSEMBLY SCHEDULE

DAY	DATE	TIME	EVENT
Thursday	24.10.24	2.30pm	Michael Morpurgo Deepawali Assembly
Thursday	14.11.24	2.30pm	Vivaldi Class Assembly
Thursday	21.11.24	2.30pm	Beethoven Class Assembly
Thursday	28.11.24	2.30pm	Year 5 Residential Assembly
Thursday	12.12.24	2.30pm	JK Rowling Hanukkah Assembly

DATES TO REMEMBER!



Halloween Disco

Thursday 24th October

5:00pm - 6.30pm

MENU 21/10/24

MENU

For full allergen & nutritional information head to <https://schoolmeals.bradford.gov.uk>



Choose from...

MON

- Cheese Pasta Bake
- Soya Pasta Bolognese
- Cheddar & Mozzarella Hot Baguette
- Jacket Potato with Cheese & Tuna



Garlic Bread
Assorted Individual Salads

Desserts...

- Oat Cookie
- Freshly Prepared Fruit

Choose from...

TUE

- Mild Chicken Curry
- Halal Chicken Doplaza
- Quorn & Veg Fried Rice
- Cheddar & Mozzarella Hot Baguette
- Jacket Potato with Cheese & Tuna

Rice, Naan Bread
Seasonal Vegetables, Assorted Individual Salads

Desserts...

- Individual Ice Cream Tub
- Freshly Prepared Fruit

Choose from...

WED

- Savoury Mince in Yorkshire Pudding
- Halal Chicken Roll
- Cheese Bolls
- Cheddar & Mozzarella Hot Baguette
- Jacket Potato with Cheese & Tuna

Creamed Potatoes, Yorkshire Pudding
Seasonal Vegetables, Assorted Individual Salads

Desserts...

- Cornflake Tart
- Freshly Prepared Fruit

Choose from...

THUR

- Cheese & Tomato Pizza
- Assorted Sandwiches

Chips
Baked Beans, Assorted Individual Salads

Desserts...

- Flapjack
- Freshly Prepared Fruit

Choose from...

FRI

- Fish Fingers
- Quorn Sausage in a Bun
- Cheddar & Mozzarella Hot Baguette
- Jacket Potato with Cheese & Tuna

Jacket Potato Wedges
Seasonal Vegetables, Assorted Individual Salads

Desserts...

- Chocolate Sponge
- Freshly Prepared Fruit

Suitable for...



VEGAN VEGETARIAN

NATIONAL ONLINE SAFETY

This week, our 'Wake Up Wednesday' guide from National Online Safety is about 'iPads'.

At National Online Safety, we believe in empowering parents, carers and trusted adults with the information to hold an informed conversation about online safety with their children, should they feel it is needed. This guide focuses on one of many devices which we believe trusted adults should be aware of. Please visit www.nationalonlinesafety.com for further guides, hints and tips for adults.



What Parents & Carers Need to Know about iPADS

Apple debuted the first iPad in 2010, kickstarting the tablet market, and it remains the best-selling tablet to this day. Although Apple doesn't offer a child-specific version, iPads are hugely popular with youngsters due to their ease of use and endless choice of apps. There's a selection of models, with different-sized screens and distinct features – including the standard iPad; the iPad Air; the iPad Pro; and the iPad mini. Thankfully, they all offer parental controls so you can regulate how your child uses the device ... and how long they spend on it.

WHAT ARE THE RISKS?

PHYSICAL DAMAGE

While some tablets (such as the Amazon Fire Kids editions) come with rugged shock-proof cases, iPads aren't built for rough and tumble. They're also more expensive than most other tablets, and any damage your child's iPad suffers could be costly to repair. Buying a child-friendly case and screen protector for the device could be a wise move, especially if it's being used by younger ones.

SCREEN ADDICTION

Like most digital devices, tablets have the potential to become quite addictive. You might find your child spending too long staring at their iPad, which could lead to irritability, mood swings and a loss of interest in more important tasks. If this happens, be sure to visit the built-in screen time settings and ensure you limit how long they're able to spend on the device each day.

INAPPROPRIATE CONTENT

18
CENSORED

Even if it would never occur to your child to go searching online for age-inappropriate sites, apps or information, there's always a possibility that something unexpected – perhaps a video that auto-plays or content incorrectly suggested by an algorithm – could appear on their tablet and upset them. You can help prevent this by adjusting the content settings (see our 'top tips' section below).

SIRI SUGGESTIONS

The parental controls built into iOS (the fundamental operating system of Apple devices) enable you to block access to most age-inappropriate content – but your child could potentially still bypass these restrictions (either accidentally or deliberately) by using Siri, Apple's voice-activated digital assistant. To avoid this, toggle the 'Ask Siri' functions to 'off' in the iPad's settings menu.

Advice for Parents & Carers

ENABLE FAMILY SHARING

Before letting little ones loose on an iPad, it's a good idea to set up Family Sharing, as this lets you utilise the parental controls to manage exactly how your child is able to use the device. You can do this fairly easily by going into the iPad's settings; once there, you'll be able to add an existing Apple account (if your child already has one) or set one up from scratch.

APPLY SOME LIMITS

The 'Downtime' function allows you to tell the iPad to lock itself at certain periods (at mealtimes or before bed, for instance), while 'App Limits' removes access to certain apps once they've been used for a specified length of time each day. The iPad can display a reminder when these limits have nearly been reached, letting your child mentally prepare for the end of their gaming or viewing time.

STOP ACCIDENTAL SPENDING

To empower your child with an increased sense of freedom on their device (without giving yourself something else to worry about in the process) you could enable the iPad's 'Ask to Buy' feature. Whenever your child tries to download or buy an app, game or product, the iPad sends you a request to approve (or deny) it. This option only becomes available if you've set up Family Sharing.

SET CONTENT AND PRIVACY RESTRICTIONS

The parental controls can stop the iPad from displaying explicit or age-inappropriate content (in apps like iTunes and Safari, for instance) when your child is signed into their account. You'll also be able to restrict the capacity to download and install apps, and you can specify permissions which prevent children from changing the iPad's privacy settings once you've selected them.

TRACK IT DOWN

Just like the iPhone, Apple's iPads have 'Find My' software to help you locate your child's iPad – or indeed, any linked Apple devices that have gone AWOL, including phones, watches and AirPods. If you enable 'Find My' in the settings menu, it will display the last known location of an iPad that's been mislaid, as well as giving you the option to lock a missing iPad that you suspect has been stolen.

Meet Our Expert

Carly Page is an experienced technology journalist with a track record of more than 10 years in the industry, previously the editor of tech tabloid The Inquirer. Carly is now a freelance technology journalist, editor and consultant.



NOS
National Online Safety®
#WakeUpWednesday

[@natonlinesafety](https://www.facebook.com/natonlinesafety)

[/NationalOnlineSafety](https://www.facebook.com/NationalOnlineSafety)

[@nationalonlinesafety](https://www.instagram.com/nationalonlinesafety)

[@national_online_safety](https://www.tiktok.com/@national_online_safety)

Users of this guide do so at their own discretion. No liability is entered into. Current as of the date of release: 08.03.2023