

# NEWSLETTER

FRIDAY 11TH OCTOBER 2024



TEL: 01274 639049

WWW.SWAINHOUSE.CO.UK

EMAIL: OFFICE@SWAINHOUSE.BRADFORD.SCH.UK

ASPIRE

BELIEVE

PERSEVERE

ACHIEVE

## MYHAPPYMIND HAPPINESS HEROES



Mrs Pugh held a special assembly this week to announce this year's Happiness Heroes!

We are very excited for the year ahead and we have lots of ideas of how the Happiness Heroes will lead the way in helping all of our children look after their own happiness.

### MEET THE TEAM!



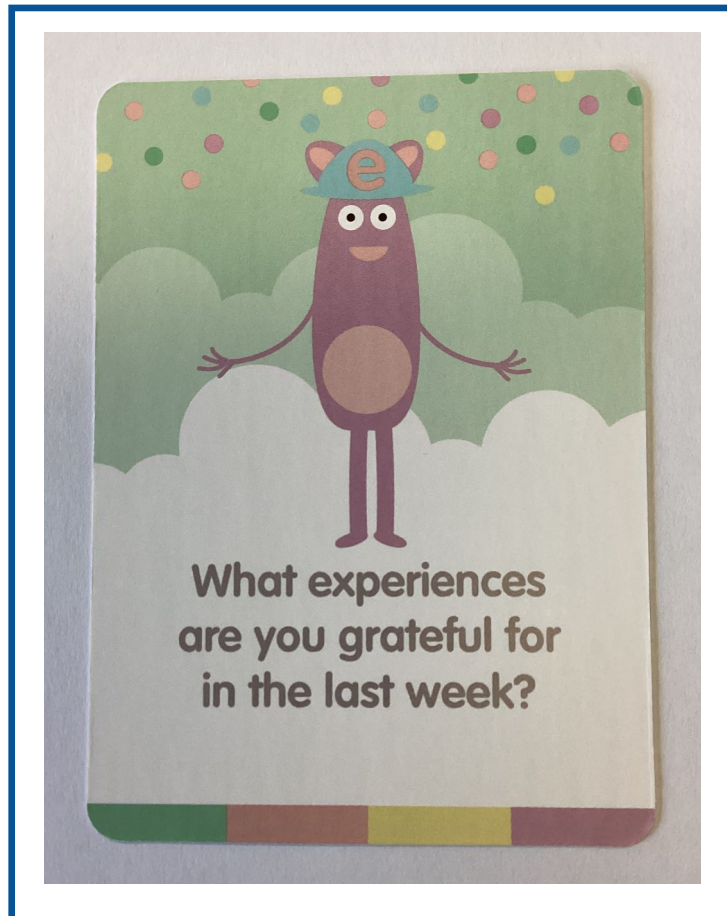
# MYHAPPYMIND

## OUR CONVERSATION CARD OF THE WEEK



Enjoy a conversation!

Each week we will share a conversation card. These are to aid conversations about mental health and happiness.



# YEAR 6 RESIDENTIAL

Year 6 had an amazing time at their residential to Newby Wiske Hall last week. The three days were packed full of incredible activities like: aeroball, abseiling, canoeing, climbing, archery and they even had a silent disco! Here are some pictures of our time there.



# ZARACH CHARITY

## Zarach's Mission:

To end child bed poverty in England, giving children the opportunity to engage at school and a chance to break the cycle of poverty.

*"Are their school-age children unable to gain a good night's sleep in your home due to not having the appropriate beds, no beds, broken beds, or multiple children sharing a bed? Did you know that Zarach is a charity that exists in your area to provide brand new beds, pyjamas, and bedding for children where families can no longer afford to buy them? If you are one of these families, please see your pastoral team in your son/daughters school and they can submit a referral to Zarach - please see the attached visual aid of our process."*

## Zarach Referral Process

For Schools to share the journey with parents.



To view the charity's website click [here](#)



# HARVEST DAY

Children can come to school wearing **autumnal colours** and the day will be spent learning about and celebrating Harvest. Parents/guardians are invited to come into school from 2.00pm till 3.00pm to join in with some of our Harvest activities.



This year we will be supporting 'The Bradford Food Bank', a charity which offers food parcels to people in crisis from the Bradford area. They provide three days' nutritionally balanced emergency food and support local people in food crisis. They are part of the Trussell Trusts nationwide network of foodbanks, working to combat poverty and hunger across the UK. Due to a large increase in demand recently they are appealing for food donations to aid their project. We are asking if you would be kind enough to send a contribution of any of the following items, in support of our Harvest celebrations, which will then be collected and used by the Bradford Food Bank





Bradford Council are pleased to announce an exciting new reading adventure at Bradford Libraries. The Secret Book Quest is a brand-new, fun and free reading challenge designed to encourage a lifelong love of reading in children. Every child who signs up will receive a special Secret Book Quest booklet packed full of puzzles, fun facts and activities. There are 10 themed 'zones' for children to travel through including animals, underwater, space and technology. To complete the Quest and win a prize, they must read five books for each zone and collect all the code-stickers along the way – a total of 50 books. Children are presented with a certificate upon reaching the halfway mark (reading 25 books) and again when they complete the challenge (reading 50 books), along with a special finisher's prize. Bradford Libraries will be launching The Secret Book Quest on Saturday 12th October across the district. At 11am on Saturday 12th October, City Library will be joined by a special guest! Writer, storyteller and poet Conrad Burdekin will be providing fun storytelling, a scavenger hunt and creative writing session. This is a FREE event for 5-12 year olds. Contact City Library to book your place.

# WHO TO SPEAK TO IN SCHOOL



## Who to speak to in school

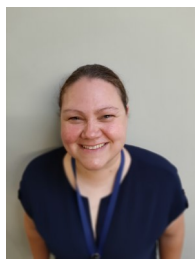
There may be times when you need to speak to a member of staff in school about your child. Please always speak to your child's Class Teacher first. If you need to speak to your child's Phase Leader, their details are below.



If your child is in Early Years, you can speak to Mrs Laycock.



If your child is in KS1, you can speak to Mrs Normington.



If your child is in Lower Key Stage 2, you can speak to Miss Broomfield.



If your child is in Upper Key Stage 2, you can speak to Mr Gibbs.

# SHARING YOUR NEWS!



Dale in Year 4 plays for the Phoenix Allstars football team. This week he has been presented with a trophy for the best defending. Well done Dale!

Charlie in Year 3 has received an award for his football training this week. Great effort Charlie, well done!



If you have any news about your child's achievements that you would like to share in our newsletter, please speak to your child's class teacher!

**CLICK THE ICON TO SEE REGULAR UPDATES  
ON OUR FACEBOOK PAGE!**





# SPOTLIGHT ON SEND

## (SPECIAL EDUCATIONAL NEEDS AND DISABILITIES)

Each half-term, I write a section on our school newsletter to keep parents and carers of pupils on the SEND register 'in the loop' about all things SEND related. I highlight support available in school and also resources and workshops available in the local area.

Mrs. White

Assistant Head/SEND.co

Keep updated with all things SEND at Swain House. Click [here](#) or scan the QR code.



### **Bradford Local Offer**

The Local Offer brings together information for children and young people with special educational needs and disabilities and their families.

<https://localoffer.bradford.gov.uk/>



HELP AND  
INFORMATION  
FOR FAMILIES  
WITH SPECIAL  
NEEDS AND  
DISABILITIES  
BRADFORD LOCAL OFFER



### **Bradford Local Offer**

The SEND Local Offer website provides valuable information and resources for parents and carers. There is a useful list of support groups available in the local area. Click [here](#) to see the support group list.

In their monthly newsletter you will find out about the latest useful SEND news, information, stories, upcoming events, consultations, holiday activities and much more inside every issue. Sign up for the newsletter [here](#).

### **Speech and Language**

We are aware of the waiting lists for speech and language sessions via the NHS.

Please [click here](#) to access NHS resources to support your child at home.

If you are concerned about your child's communication skills, you can refer them for support using this link - [Click here](#)

CLICK THE ICON TO SEE REGULAR UPDATES ON OUR  
FACEBOOK PAGE!



# WEEKLY UPDATES

## ATTENDANCE AND PUNCTUALITY

Here are this week's attendance and punctuality figures. There is a proven link between attendance and achievement and it is therefore very important that your child attends school and is on time unless they are too unwell to do so. Our doors open at **8.30am** and close at **8.40am**.

Please see the information below for our whole school and class attendance for the week ending **11/10/24**.

### Early Years and Key Stage 1:

CLASS	PERCENTAGE %	LATES
Elm	97.5%	3
Willow	97.5%	2
Kandinsky	95.7%	0
Matisse	99.7%	0
Lowry	97.9%	1
Van Gogh	95.1%	0

### Key Stage 2:

CLASS	PERCENTAGE %	LATES
Anne Fine	97.0%	4
Roald Dahl	92.2%	1
JK Rowling	97.3%	1
Michael Morpurgo	97.1%	0
Elgar	95.3%	2
Mozart	94.5%	6
Beethoven	98.1%	3
Vivaldi	99.3%	1

Congratulations to **Matisse Class and Vivaldi Class** for having the **best attendance** this week.

Well done to **Kandinsky class, Matisse Class, Van Gogh Class and Michael Morpurgo Class** for having **no lates!**

Our whole school attendance this week:

**96.7%**

## COMMUNICATION SINCE THE LAST NEWSLETTER

These are the letters, messages and website updates that have been sent out this week. If you have not received any of these letters, please speak to your child's class teacher or contact the office on **01274 639049**.

<b>WEBSITE UPDATES:</b>	National Online Safety - 'Wake Up Wednesday' guide from National Online Safety is about 'Snapchat'
<b>LETTERS:</b>	08.10.24 - Year 5 Trip to Bradford City Stadium 08.10.24 - Halloween Disco 08.10.24 - Friends of Swain House Primary School 11.10.24 - Accreditation Letter - MyHappyMind
<b>MESSAGES VIA PARENTAPPS:</b>	11.10.24 - Year 5 Homework

# MYHAPPYMIND APP

The myHappyMind app has been updated and now includes some new features—kids zone, myHappyMind games and mini master classes for parents .



## Download your FREE myHappyMind Parent App



...An online resource to support you and your family to learn more about how you can use myHappyMind to support your child.



**myHappyMind for Parents**

Exclusively for parents with children at a myHappyMind School or Nursery.



Learn all about what your children are learning in school



**YOU WILL NEED THIS AUTHENTICATION CODE TO SIGN UP**

**107220**

---

# MYHAPPYMIND

## **We are proud to announce that we are a myHappymind Bronze Accredited school!**

This means we have demonstrated our  
commitment to building a wellbeing culture for  
our entire school community.



# HELP GREAT OAK NURSERY

## GET EXTRA RESOURCES FOR YOUR CHILD



### DID YOU KNOW

We can claim £300 of additional funding for every eligible 3 or 4 year old in our care.

This money helps us provide activities and new equipment to benefit your child.

### HOW CAN YOU HELP?

If you receive one of the benefits listed, we will be able to access this Early Years Pupil Premium funding for your child.

To check if your child is eligible, **scan the QR code** with your phones camera and complete the form or call the office on **01274 639049**



### DO YOU RECEIVE ANY OF THE FOLLOWING BENEFITS:

- Income Support
- Income-based Job Seekers Allowance
- Guaranteed Element of State Pension Credit
- Universal Credit, and household income is less than £7,400 a year after tax, not including benefit payments
- Child Tax Credit (provided you're not also entitled to Working Tax Credit and have an annual gross income of less than £16,190)
- Working Tax Credit run on paid for 4 weeks after you stop qualifying for Working Tax Credit.
- Support under Part Vi of the Immigration and Asylum Act 1999 or if your child has been looked after by the Local Authority for at least one day, adopted from care, left care through special guardianship or subject to a child arrangement order.





## Open Days

Is your child starting school in September 2025?

Why not visit Swain House Primary School to find out about our exceptional standards, amazing school environment and wrap around care (from 7:30am to 6pm) to support your child through their school journey.

**Ofsted** said " *This is a happy and friendly school. Leaders have a deep commitment to serving their pupils, families and community.*"

**Monday 21st Oct @ 10am**  
**Monday 21st Oct @ 5pm**  
**Monday 11th Nov @ 5pm**

**BOOK NOW**

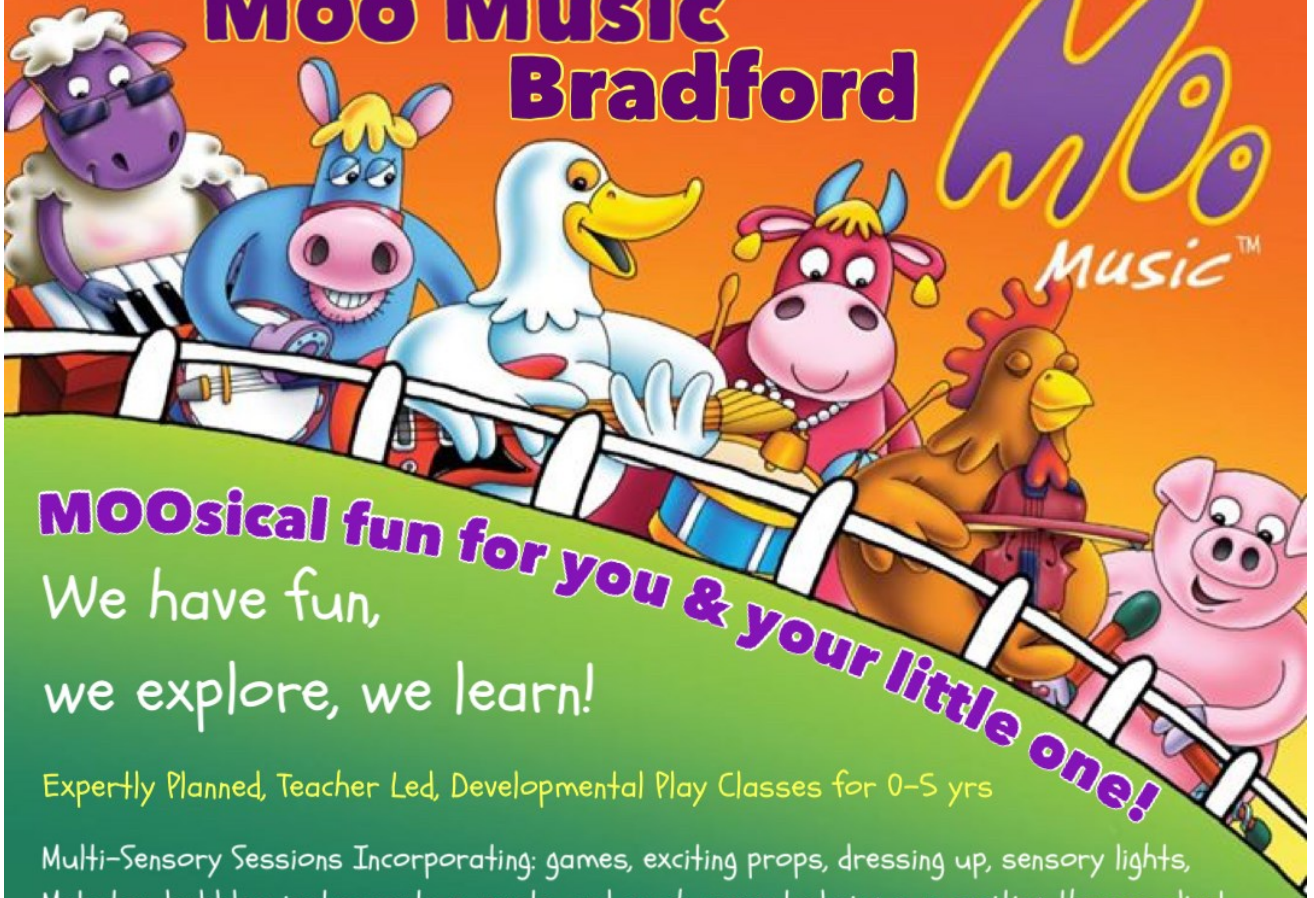
 01274 639049

 [office@swainhouse.bradford.sch.uk](mailto:office@swainhouse.bradford.sch.uk)

**FIND US ON**



# Moo Music Bradford



**MOOsical fun for you & your little one!**

We have fun,  
we explore, we learn!

Expertly Planned, Teacher Led, Developmental Play Classes for 0-5 yrs

Multi-Sensory Sessions Incorporating: games, exciting props, dressing up, sensory lights, Makaton, bubbles, instruments puppets, and much more to bring our exciting themes alive!

Inspired by the seasons and in line with Early Year's Guidance

## Fridays September, 2024

Swain House Primary School:

Radcliffe Avenue, BD2 1JL

Mixed@ 10.45-11.30

Baby@ 12-12.45

Contact Farmer Sally:

07431 502 401

sallyr@moo-music.co.uk



Follow us on:



**Visit: [moo-music.co.uk/areas/bradford](https://moo-music.co.uk/areas/bradford)**

# CHRISTMAS FAIR



★ *Join us at* ★

## SWAIN HOUSE PRIMARY SCHOOL CHRISTMAS FAIR

★ ★

TOMBOLAS.GAMES.RAFFLES.MUSIC.STALLS  
AND DELICIOUS TREATS!

FRIDAY 6TH DECEMBER • 4.00PM - 5.30PM

If you would like to have a stall at our  
fair please email your interest to  
[friends@swainhouse.bradford.sch.uk](mailto:friends@swainhouse.bradford.sch.uk)



Entrance

50p





# COMMUNITY NEWS

## FREE Sim Card

Cost of Living Crisis  
Support and Resources



ACTIVE MINDS

Active Minds CIC in Partnership with Vodafone are offering free Sim Cards to those on a low income or those with no internet

FREE  
Sim Card



FREE  
Unlimited  
Minutes

FREE  
Unlimited  
Texts

FREE  
DATA



For further information contact  
Active Minds CIC  
Thornbury Centre  
79 Leeds Old Road  
T: 07900176070

LIKE AND FOLLOW US  
f x @  
@GOWILDOUTDOORS

**DATES**  
FROM 28TH OCTOBER  
UNTIL 1ST NOVEMBER  
CALVERLEY COFE PRIMARY SCHOOL  
10-4PM

**GO WILD OUTDOORS**

OCTOBER HALF TERM 2024  
FOREST HOLIDAY CAMP

**OUR FUN ACTIVITIES INCLUDE**

- OUTDOOR PLAY
- DEN BUILDING
- WOODLAND CRAFTS
- SURVIVAL SKILLS
- WHITTLING
- SOFT AXE THROWING
- CAMPFIRE TREATS
- SOFT ARCHERY

+ MANY MORE !

ALL CHILDREN 4+ IN RECEPTION (24/25) ACROSS THE DISTRICT ARE WELCOME TO JOIN (NOT SUITABLE FOR NURSERY AGES)

WRAPAROUND CARE + INDOOR FACILITIES AVAILABLE

**£25 PER CHILD +**  
**MULTIPLE DISCOUNT DAYS**

BOOK YOUR CHILD'S PLACES VIA-  
[WWW.GOWILDOUTDOORS.CO.UK](http://WWW.GOWILDOUTDOORS.CO.UK)

FSA Forest School Provider

## MINDFULNESS & WELLBEING

### VENUE

Active Minds CIC  
Thornbury Centre  
79 Leeds Old Rd  
Bradford BD3 8Jx

### Do you want to .....

- Improve your health & wellbeing
- Make new friends
- Build confidence & self esteem
- Learn new skills
- Improve healthy eating
- Join in fun activities: walking, swimming, zumba, arts & craft.....& much more

LADIES ONLY

Every Tuesday 10am

For Further Information & registration contact Ashi

T: 07900176070

E: [activeminds@gmx.co.uk](mailto:activeminds@gmx.co.uk)



ACTIVE MINDS

CP5 Community Partnership

Bradford District and Craven Health and Care Partnership



# REMINDERS

## BREAKFAST CLUB

Our Breakfast Club opens at 7.30am at a cost of £3.00 each per day or at 7.45am at the cost of £2.50 each per day. Children from Nursery to Year 6 can attend.

If you would like to book your child into Breakfast Club, please use ParentPay.

## AFTER SCHOOL CLUB

Our After School Club is available until 4pm at a cost of £2.50 each per day.

If you would like to book your child into After School Club, please use ParentPay.

## EXTRA CLUB

We also offer an Extra Club service that runs until 5.30pm at a cost of £4.50 per day.

If you would like to book your child into Extra Club, please use ParentPay.

**Please can you ensure that Extra Club places are booked and paid for in advance - by Monday morning. This ensures registers are accurate and places are booked and guaranteed.**

**If you have any problems booking any of our before or after school clubs, please contact Miss Armitage, one of our learning mentors.**

## DIARY DATES

ANY NEWLY ADDED ITEMS WILL BE IN BLUE

DAY	DATE	TIME	EVENT
Friday	18.10.24		Harvest Day
Thursday	24.10.24	5.00pm - 6.30pm	Halloween Disco
Thursday	24.10.24		School Closes
Monday	04.11.24		School Reopens

# COMING UP IN AUTUMN TERM

## AUTUMN TERM ASSEMBLY SCHEDULE

DAY	DATE	TIME	EVENT
Thursday	17.10.24	2.30pm	Roald Dahl Class Assembly
Thursday	24.10.24	2.30pm	Michael Morpurgo Deepawali Assembly
Thursday	14.11.24	2.30pm	Vivaldi Class Assembly
Thursday	21.11.24	2.30pm	Beethoven Class Assembly
Thursday	28.11.24	2.30pm	Year 5 Residential Assembly
Thursday	12.12.24	2.30pm	JK Rowling Hanukkah Assembly

## DATES TO REMEMBER!



Halloween Disco

Thursday 24th October

5:00pm - 6.30pm

More details to follow!

# MENU 14/10/24

# MENU

For full allergen & nutritional information head to <https://schoolmeals.bradford.gov.uk>



## Choose from...

**MON**

- Vegetarian CHILI & Nachos
- Spaghetti Marinara
- Cheddar & Mozzarella Hot Baguette
- Jacket Potato with Cheese & Tuna

Assorted Individual Salads

## Desserts...

- Flapjack
- Freshly Prepared Fruit

## Choose from...

**TUE**

- Pasta Bolognese
- Halal BBQ Chicken Pasta Bake
- Mac n Cheese
- Cheddar & Mozzarella Hot Baguette
- Jacket Potato with Cheese & Tuna

Garlic Bread  
Assorted Individual Salads

## Desserts...

- Chocolate Mousse
- Freshly Prepared Fruit

## Choose from...

**WED**

- Roast of the Day
- Halal Roast Chicken Breast
- Quorn Toad In the Hole
- Jacket Potato with Cheese & Tuna
- Cheddar & Mozzarella Hot Baguette

Roast Potatoes, Yorkshire Pudding  
Seasonal Vegetables, Assorted Individual Salads

## Desserts...

- Jam Sponge
- Freshly Prepared Fruit

## Choose from...

**THUR**

- Cheese & Tomato Pizza
- Assorted Sandwiches

Chips  
Baked Beans, Assorted Individual Salads

## Desserts...

- Individual Ice Cream Tub
- Freshly Prepared Fruit

## Choose from...

**FRI**

- Fish Fingers
- Salmon Fishcakes
- Vegetable Samosa
- Cheddar & Mozzarella Hot Baguette
- Jacket Potato with Cheese & Tuna

Jacket Potato Wedges  
Seasonal Vegetables, Assorted Individual Salads

## Desserts...

- Chocolate Sponge
- Freshly Prepared Fruit

Suitable for...



VEGAN VEGETARIAN

# NATIONAL ONLINE SAFETY

This week, our 'Wake Up Wednesday' guide from National Online Safety is about 'Snapchat'.

At The National College, our WakeUpWednesday guides empower and equip parents, carers and educators with the confidence and practical skills to be able to have informed and age-appropriate conversations with children about online safety, mental health and wellbeing, and climate change. Formerly delivered by National Online Safety, these guides now address wider topics and themes. For further guides, hints and tips, please visit [nationalcollege.com](https://nationalcollege.com).

## What Parents & Educators Need to Know about

# SNAPCHAT

AGE RESTRICTION  
**13+**

Snapchat is a messaging app which allows users to send images, videos and texts to others. Its best-known feature is that anything sent 'disappears' 24 hours after it's been viewed; however, users are known to take screenshots or use another device to obtain a photo of their screen. In 2023, Snapchat added a chatbot function called 'My AI'.

### WHAT ARE THE RISKS?

#### SCAMS AND BLACKMAIL

Predators can exploit Snapchat's disappearing messages feature by, for example, telling a user they have naked photos of them (regardless of whether it is true or not) and will share them online unless they send them money. Teens then (understandably) panic and worry about the long-term consequences. Snapchat's own research found that 65% of teenagers had experienced this – either on this app or others.

#### EXCESSIVE USE

Snapchat works hard on user engagement, with features like streaks (messaging the same person every day to build up a high score). The app also has sections called 'Discover' and 'Spotlight'. It claims the content shown here is relevant to each user, but it could also be seen as an easy way to hook users into watching videos endlessly. Furthermore,

#### INAPPROPRIATE CONTENT

Some content on Snapchat simply isn't suitable for children. The hashtags used to group content are determined by the poster, so even an innocent search term could still yield age-inappropriate results. The app's 'disappearing messages' feature also makes it easy for young people to share explicit images on impulse – so sexting continues to be a risk associated with Snapchat.

#### ARTIFICIAL INTELLIGENCE

My AI is Snapchat's new chatbot, which replies to questions in a human-like manner. However, the software is still in its infancy and has significant drawbacks, such as biased, incorrect or misleading responses. There have already been numerous reports of young users turning to AI for medical help and diagnoses, which could be inaccurate and therefore potentially dangerous.

#### ONLINE PRESSURES

Although many of Snapchat's filters are designed to entertain or amuse, the 'beauty' effects on photos can set unrealistic body image expectations – creating feelings of inadequacy if a young person compares themselves unfavourably with other users. Snapchat now also has 'priority' notifications (which still get displayed even if a device is in 'do not disturb' mode), increasing the pressure on users to log back in and interact.

#### VISIBLE LOCATION

A feature called 'SnapMaps' highlights your device's exact position on a virtual map, which is visible to other users. There are options to restrict who can see this information: all friends, selected friends or just you. Snapchat also has real-time location sharing, which is intended as a buddy system to help friends keep track of each other – but it could also be used to track a young person for more sinister reasons.

## Advice for Parents & Educators

### SET CONTROLS VIA FAMILY CENTRE

Snapchat has parental controls called 'Family Centre'. You must invite a child to the Family Centre for them to join. This allows you to view their friends list, see who they have chatted with in the last 7 days (but not to view the specific messages), and report any concerns.



### TALK ABOUT REAL LIFE SCAMS

If a young person is mature enough to have Snapchat, then they are mature enough to have a conversation about scams, nudes and blackmail. Have this discussion before you let them join. Share some real-life examples. Discuss the importance of never adding strangers and discourage them from sharing nudes. If they are lured into a scam, encourage them to tell you immediately, then block and delete the predator and screenshot any evidence.



### DISCUSS AI

Although My AI's responses can often give the impression that it's a real person, it's essential that young people remember this certainly isn't the case. Encourage children to think critically about My AI's replies to their questions: are they accurate and reliable? Remind them that My AI shouldn't replace chatting with their real friends, and that it's always better to talk to an actual person in relation to medical matters.



### CHAT ABOUT CONTENT

It may feel like an awkward conversation (and one that young people can be reluctant to have) but it's important to talk openly and non-judgementally about sexting. Remind children that once something's online, the creator loses control over where it ends up – and who else sees it. Likewise, it's vital that children understand that some 'challenges' which become popular on the platform may have harmful consequences.



### KEEP ACCOUNTS PRIVATE

Profiles are private by default, but children may make them public to gain more followers. Snap Stories are visible to everyone a user adds unless they change their settings. On SnapMaps, their location is visible unless Ghost Mode is enabled. It's safest for a child to avoid adding people they don't know in real life – especially since the addition of My Places, which allows people to see where users regularly visit.



### BE READY TO BLOCK AND REPORT

If a stranger *does* connect with a child on Snapchat and begins to make them feel uncomfortable through bullying, pressure to send explicit images or by sending sexual images to them, the child can select the three dots on that person's profile and report or block them. There are options to state why they're reporting that user – such as annoying or malicious messages, spam or masquerading as someone else.



### Meet Our Expert

Dr Claire Sutherland is an online safety consultant, educator and researcher who has developed and implemented anti-bullying and cyber safety policies for schools. She has written various academic papers and carried out research for the Australian government comparing internet use and sexting behaviour of young people in the UK, USA and Australia.



#WakeUpWednesday

The National College

Source: See full reference list on guide page at: <https://nationalcollege.com/guides/snapchat-2021>

X @wake\_up\_weds

f /www.thenationalcollege

@wake.up.wednesday

@wake.up.weds

Users of this guide do so at their own discretion. No liability is entered into. Release date: 17.05.2023 Last reviewed: 31.05.2024